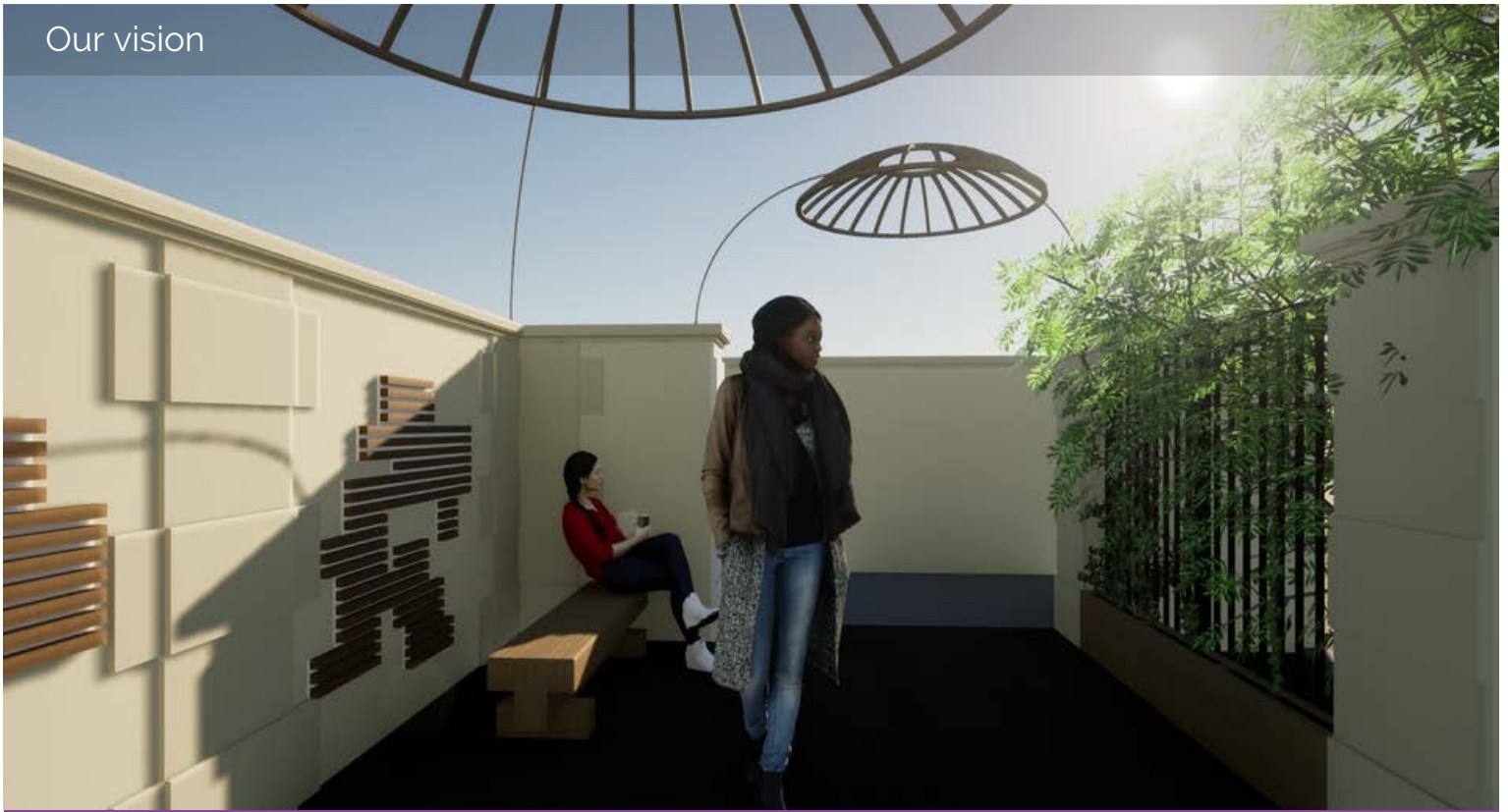


Our vision

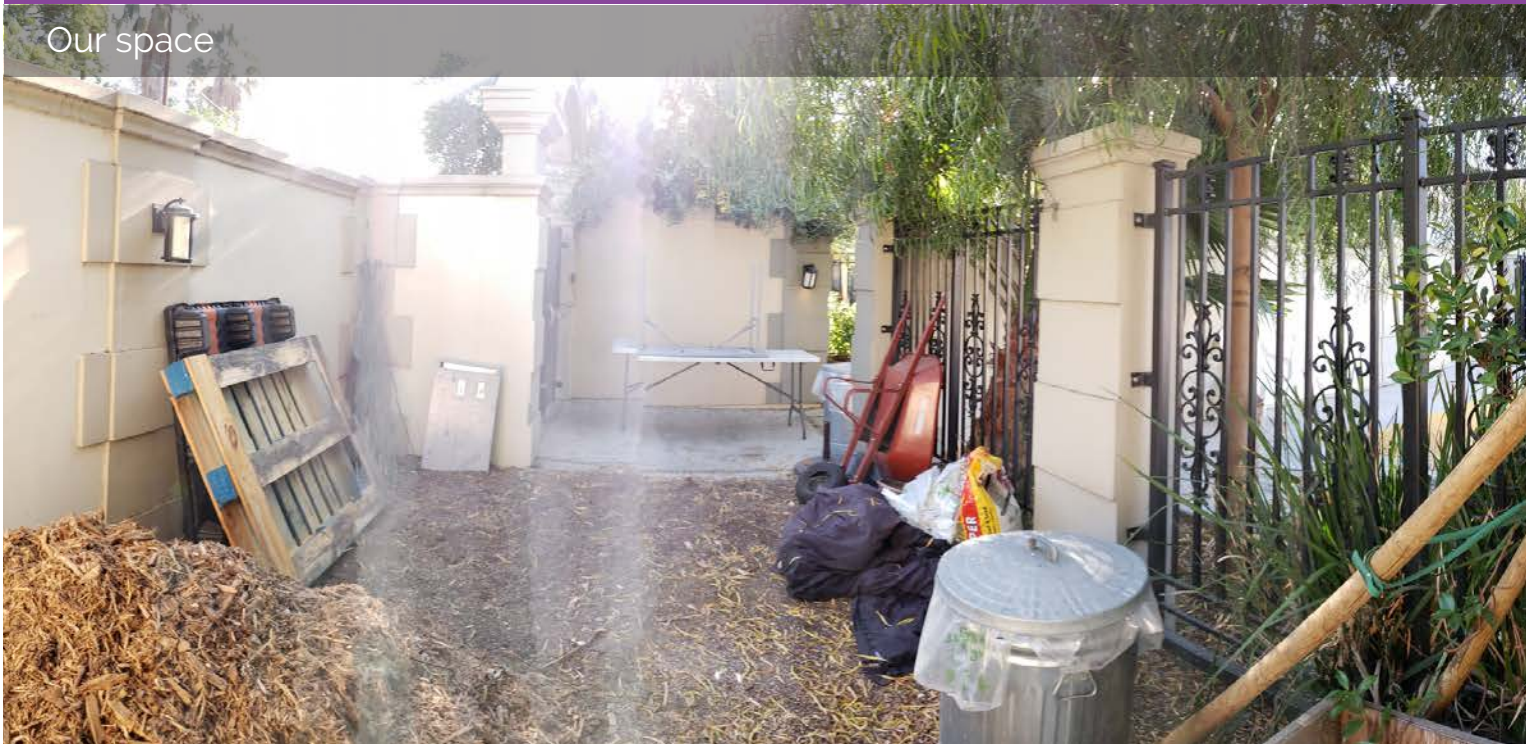


Remembrance Garden



With the community's support, we can build upon the foundation of this vision. Plaques where we can inscribe names of people to be remembered. Climbing plants and lights to create a feeling of protection and comfort overhead. Benches so people can rest tired bodies and flowers to rejuvenate weary hearts and minds.

Our space



Have ideas on how to support? Reach out to Elyse at info@thecenterinhollywood.org

Our vision



Remembrance Garden

With the community's support, we can build upon the foundation of this vision. Plaques where we can inscribe names of people to be remembered. Climbing plants and lights to create a feeling of protection and comfort overhead. Benches so people can rest tired bodies and flowers to rejuvenate weary hearts and minds.

Our space



Have ideas on how to support? Reach out to Elyse at info@thecenterinhollywood.org



Memorial services are currently held on our patio. The Remembrance Garden will provide a permanent space where the life and memories of those we love will be permanent.

The Legacy Committee

Although death is part of life, few of us are prepared for life after losing a loved one. We frame death as something difficult to talk about, so it deserves a space where it can be discussed. This newly formed committee, comprised of Center staff, was created to help staff and participants grieve and celebrate the lives of those who have touched our souls. From weekly Death Cafes, encouragement and resources for self-care, and support groups, the committee is creating a safe space for our community members to express their grief as a natural course of living.

The Remembrance Garden

We believe every person is worthy of dignity and respect both in life and death.

To make sure we honor the people who touch our lives, we are transforming our flower garden space into a Remembrance Garden. Here participants and staff will have a safe space in solitude to grieve and celebrate a person's life. Participants become part of our Center community, and when a person passes, it profoundly impacts all of us. Because many participants have no home, no door to shut, no bedroom to quietly grieve in – this re-imagined garden will offer people the opportunity to reflect without distraction. It will be a serene space where everyone knows they will all be remembered and cherished.



Have ideas on how to support? Reach out to Elyse at info@thecenterinhollywood.org